

# **EBDOG CONFERENCE November 2013**

## **WORKSHOP 1**

### **FRAMEWORKS - PLANNING, PIPELINE & DELIVERY**

**Peter Colenutt – Head of Strategic Development, Hampshire CC**

**Steve Clow – Assistant Director CCBS – Property, Hampshire CC**

**Bob Wallbridge – Assistant Director CCBS – Property, Hampshire CC**

**Peter Colenutt**

## **STRATEGIC PLANNING – LA JOINT WORKING**

**Collaborate on planning more strategically and consistently**

**Ensure good decision making, the right project on the right site**

**Share client in-house expertise and best practice**

**Peter Colenutt**

## **STRATEGIC PLANNING – LA JOINT WORKING**

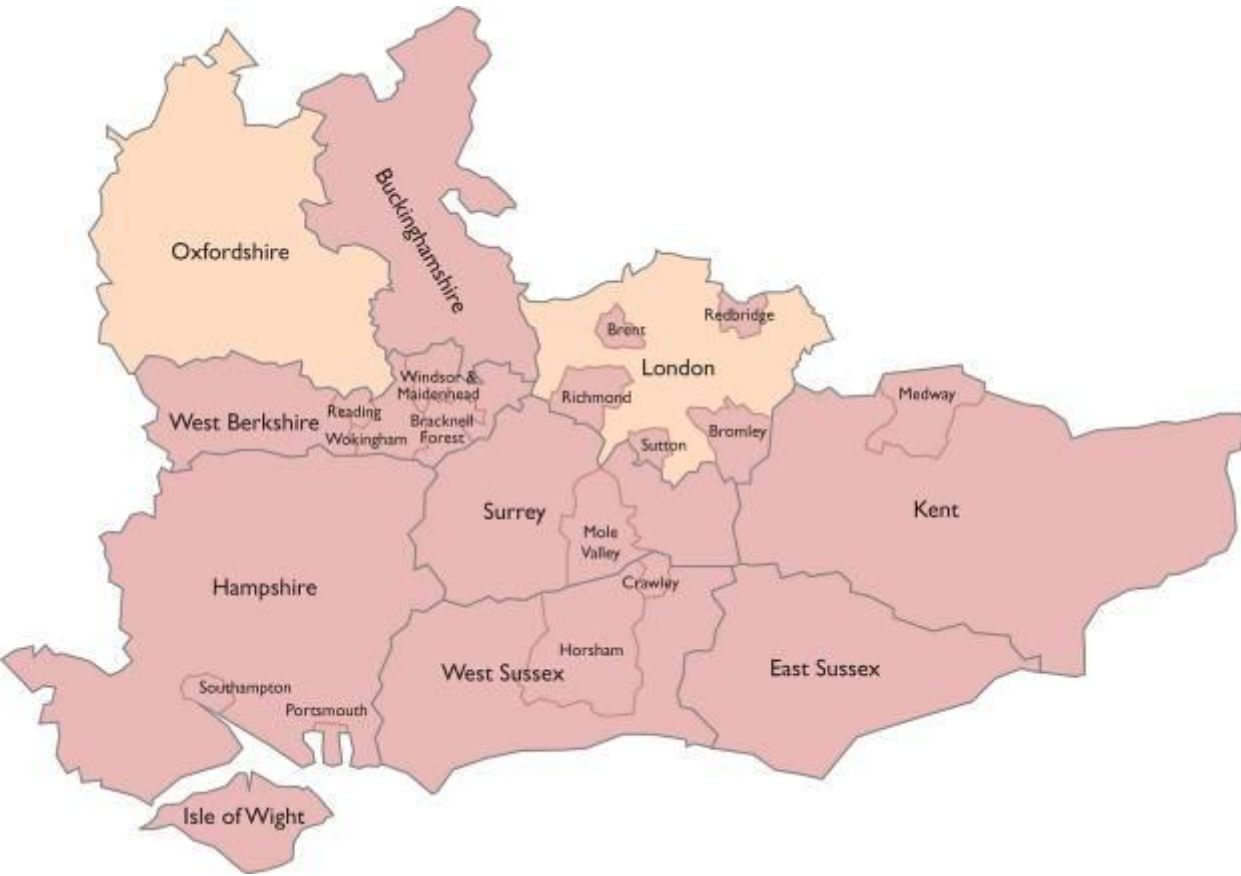
**Secure property and procurement advice for all client authorities**

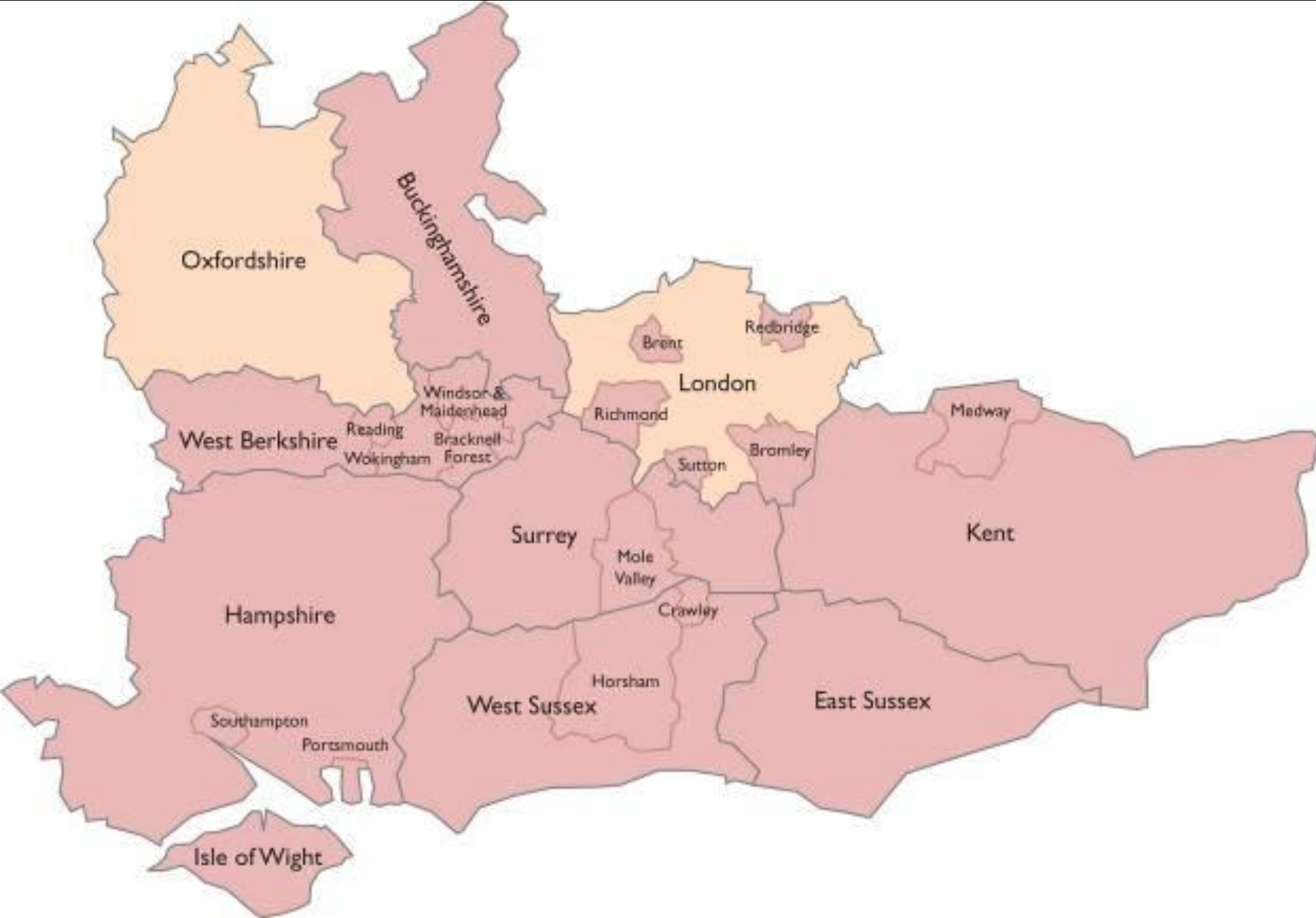
**Coordinate effective capital and revenue spending**

**Consult and prioritise at a local level**

**Steve Clow - Assistant Director CCBS – Property, Hampshire CC**

## **PIPELINE & FRAMEWORKS**





Oxfordshire

Buckinghamshire

Brent

Redbridge

London

West Berkshire

Reading

Windsor & Maidenhead

Bracknell Forest

Richmond

Sutton

Bromley

Medway

Surrey

Mole Valley

Kent

Hampshire

Crawley

West Sussex

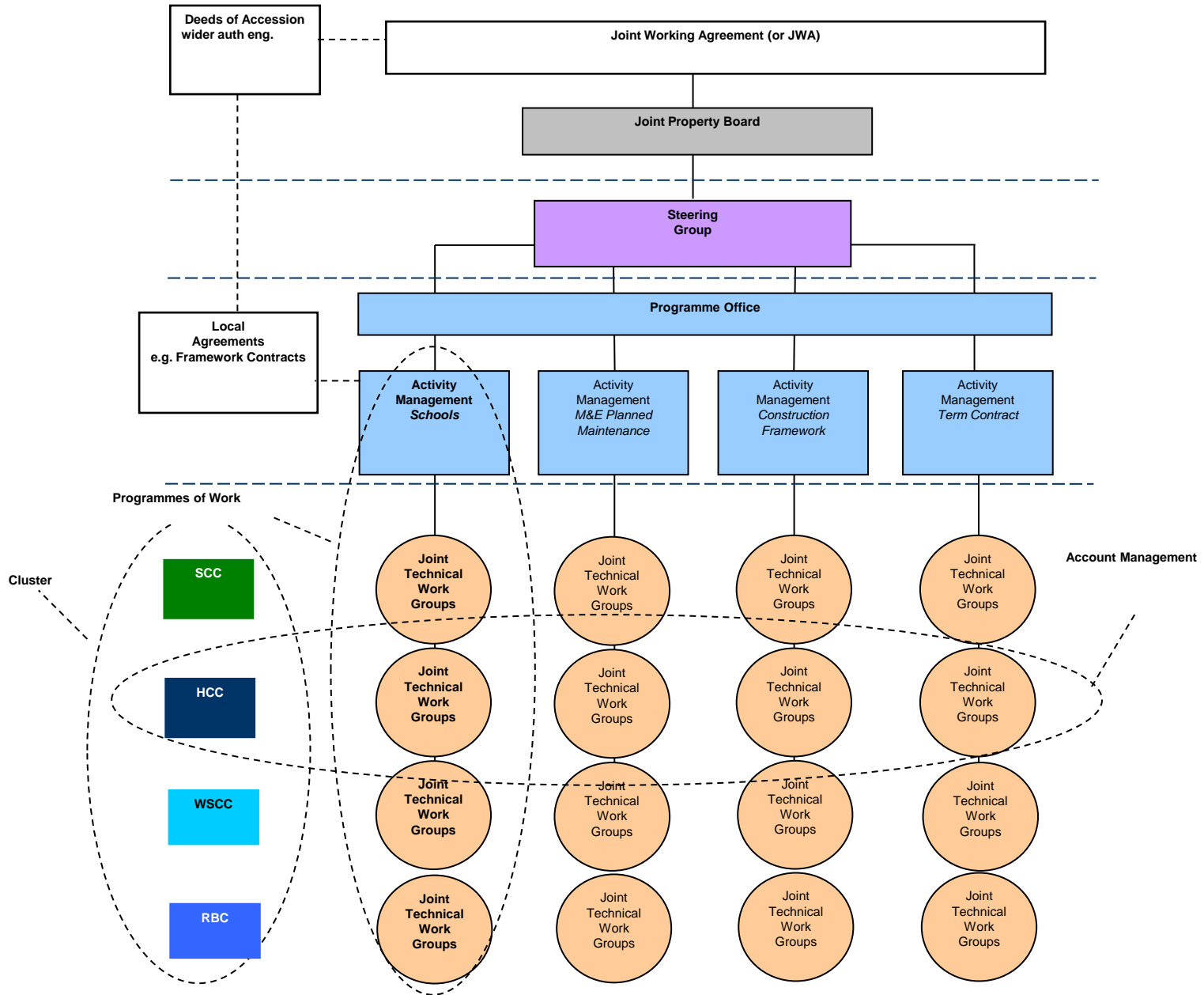
Horsham

East Sussex

Southampton

Portsmouth

Isle of Wight



**Bob Wallbridge - Assistant Director CCBS – Property, Hampshire CC**

**DELIVERY – SOUTH EAST PROPERTY CLUSTER**



# Tranche Two

## 1 Hampshire/West Sussex

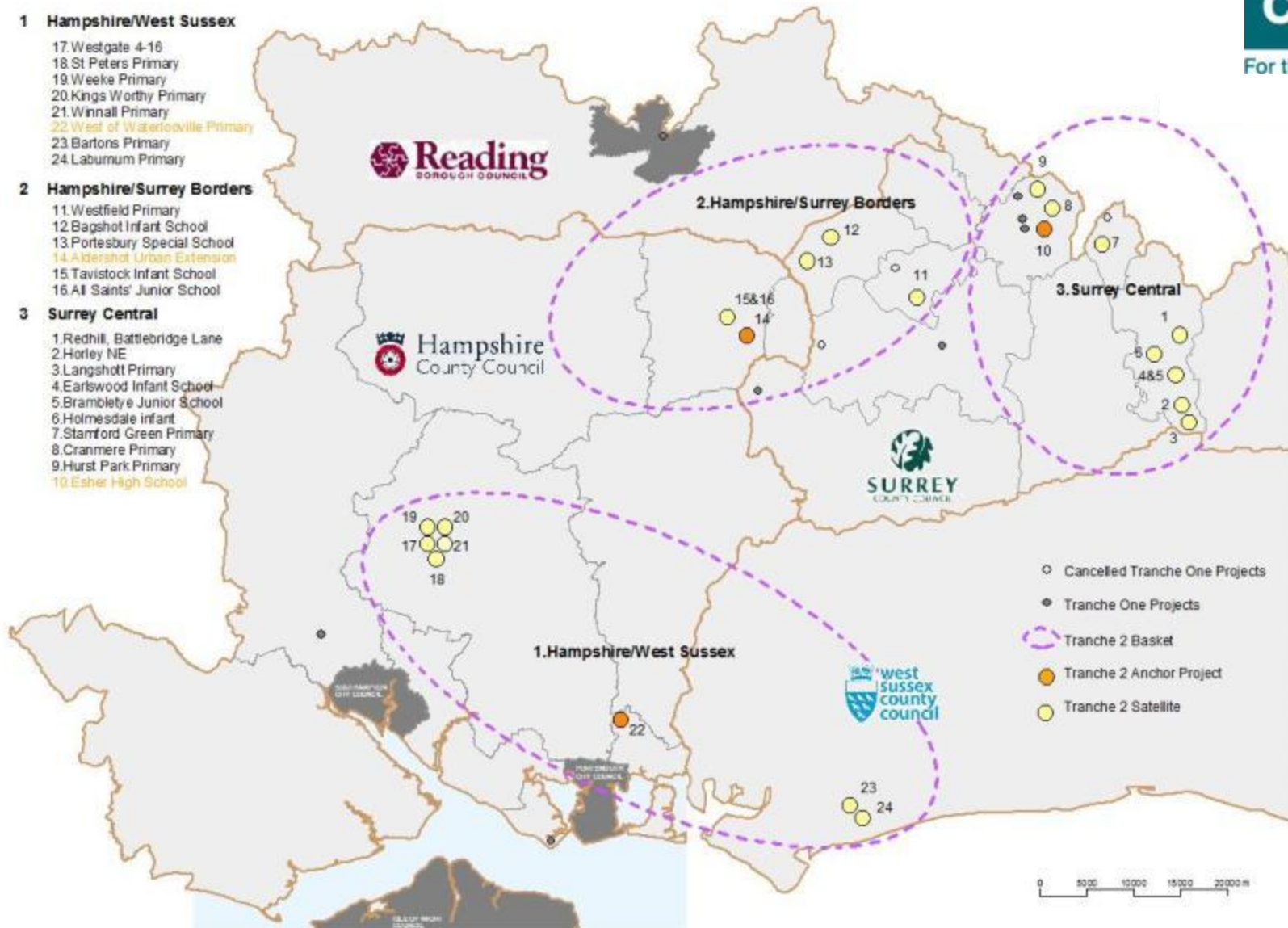
- 17. Westgate 4-16
- 18. St Peters Primary
- 19. Weeke Primary
- 20. Kings Worthy Primary
- 21. Winnall Primary
- 22. West of Waterlooville Primary
- 23. Bartons Primary
- 24. Laburnum Primary

## 2 Hampshire/Surrey Borders

- 11. Westfield Primary
- 12. Bagshot Infant School
- 13. Portesbury Special School
- 14. Aldershot Urban Extension
- 15. Tavistock Infant School
- 16. All Saints' Junior School

## 3 Surrey Central

- 1. Redhill, Battlebridge Lane
- 2. Horley NE
- 3. Langshott Primary
- 4. Earlswood Infant School
- 5. Brambletye Junior School
- 6. Holmesdale Infant
- 7. Stamford Green Primary
- 8. Cranmere Primary
- 9. Hurst Park Primary
- 10. Esher High School



TRANCHE TWO PROGRAMME MAP





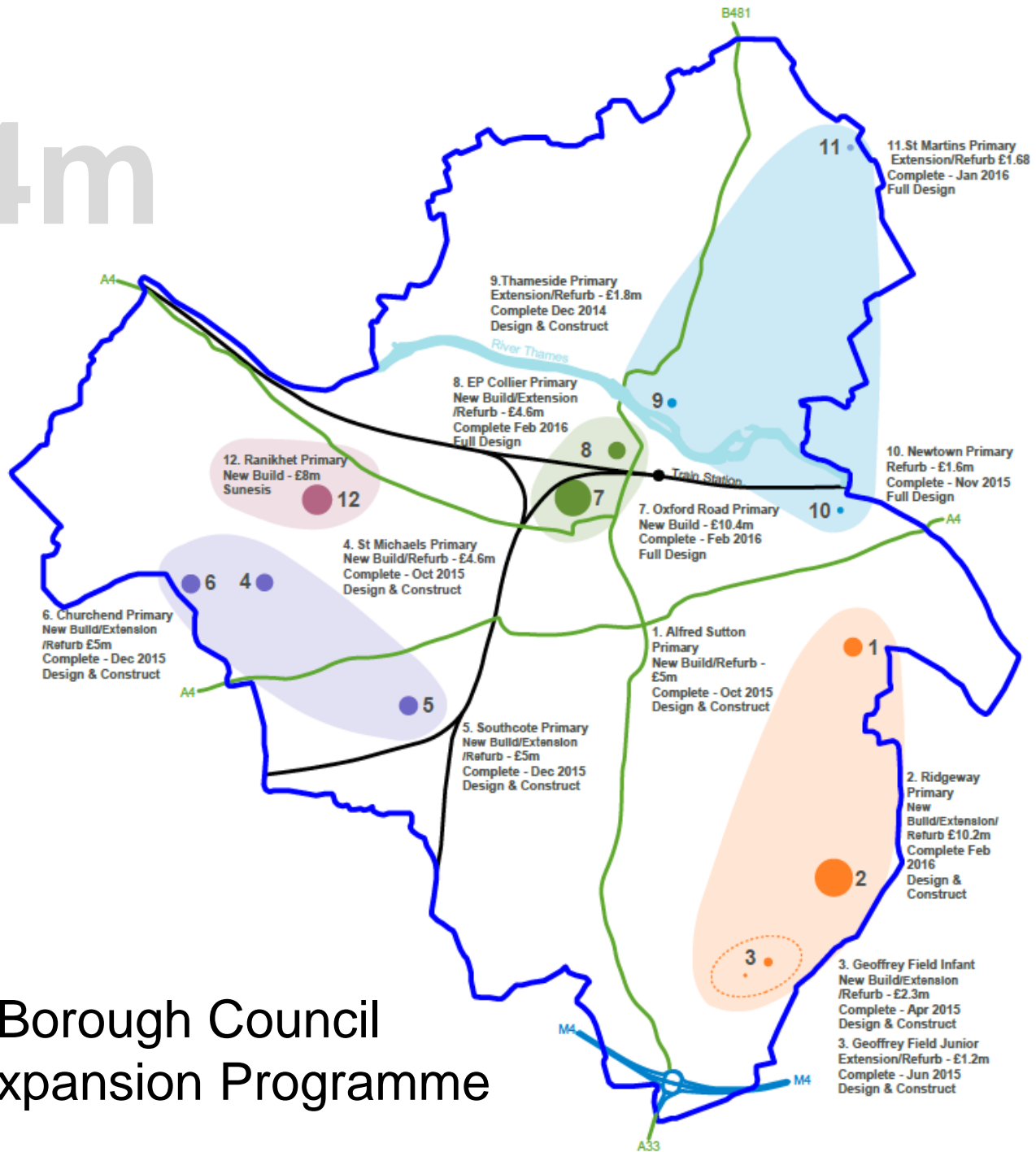
Boxgrove Primary, Surrey



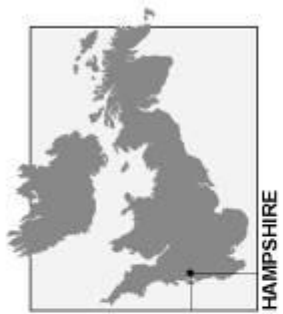


Pottersgate Primary, Surrey

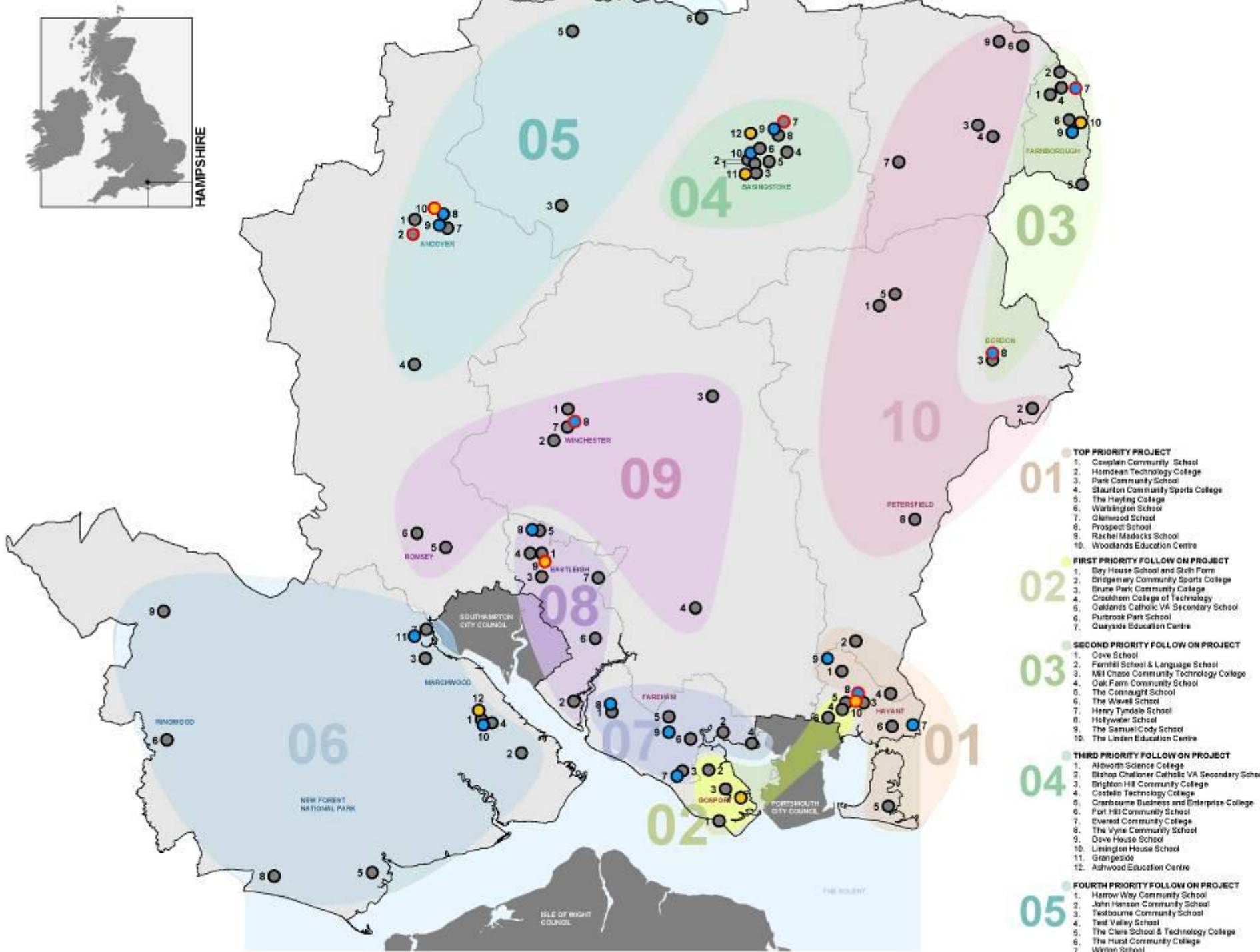
# £64m



## Reading Borough Council School Expansion Programme



HAMPSHIRE



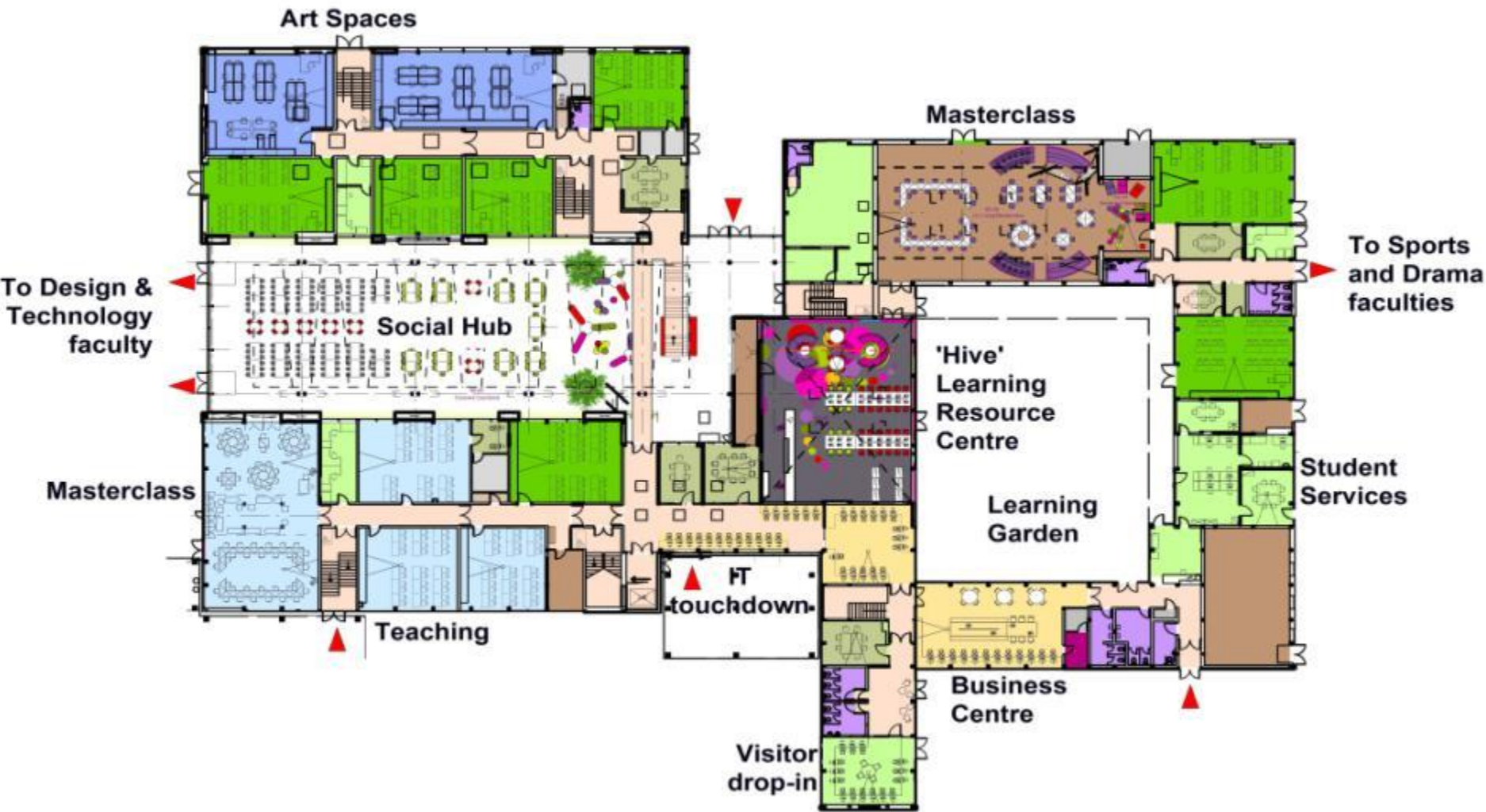
- 01 TOP PRIORITY PROJECT**
  1. Caeplan Community School
  2. Harndean Technology College
  3. Park Community School
  4. Sturton Community Sports College
  5. The Hayling College
  6. Warblington School
  7. Glenwood School
  8. Prospect School
  9. Rachel Madocks School
  10. Woodlands Education Centre
- 02 FIRST PRIORITY FOLLOW ON PROJECT**
  1. Bay House School and Stch Form
  2. Bridgeway Community Sports College
  3. Bruke Park Community College
  4. Chesham College of Technology
  5. Oaklands Catholic VA Secondary School
  6. Putbrook Park School
  7. Quayside Education Centre
- 03 SECOND PRIORITY FOLLOW ON PROJECT**
  1. Cove School
  2. Ferring School & Language School
  3. Hill Chase Community Technology College
  4. Oak Farm Community School
  5. The Connaught School
  6. The Wavell School
  7. Henry Tyndale School
  8. Holywell School
  9. The Samuel Cody School
  10. The Linden Education Centre
- 04 THIRD PRIORITY FOLLOW ON PROJECT**
  1. Aldworth Science College
  2. Bishop Challoner Catholic VA Secondary School
  3. Brighton Hill Community College
  4. Costello Technology College
  5. Cranbourne Business and Enterprise College
  6. Fort Hill Community School
  7. Eversed Community College
  8. The Vyne Community School
  9. Dave House School
  10. Livington House School
  11. Grange Side
  12. Ashwood Education Centre
- 05 FOURTH PRIORITY FOLLOW ON PROJECT**
  1. Harrow Way Community School
  2. John Hanson Community School
  3. Testbourne Community School
  4. Test Valley School
  5. The Clere School & Technology College
  6. The Hural Community College
  7. Wilton School
  8. Winton School



Barncroft Primary, Hampshire



Barncroft Primary, Hampshire



Havant Academy, Hampshire





Havant Academy, Hampshire